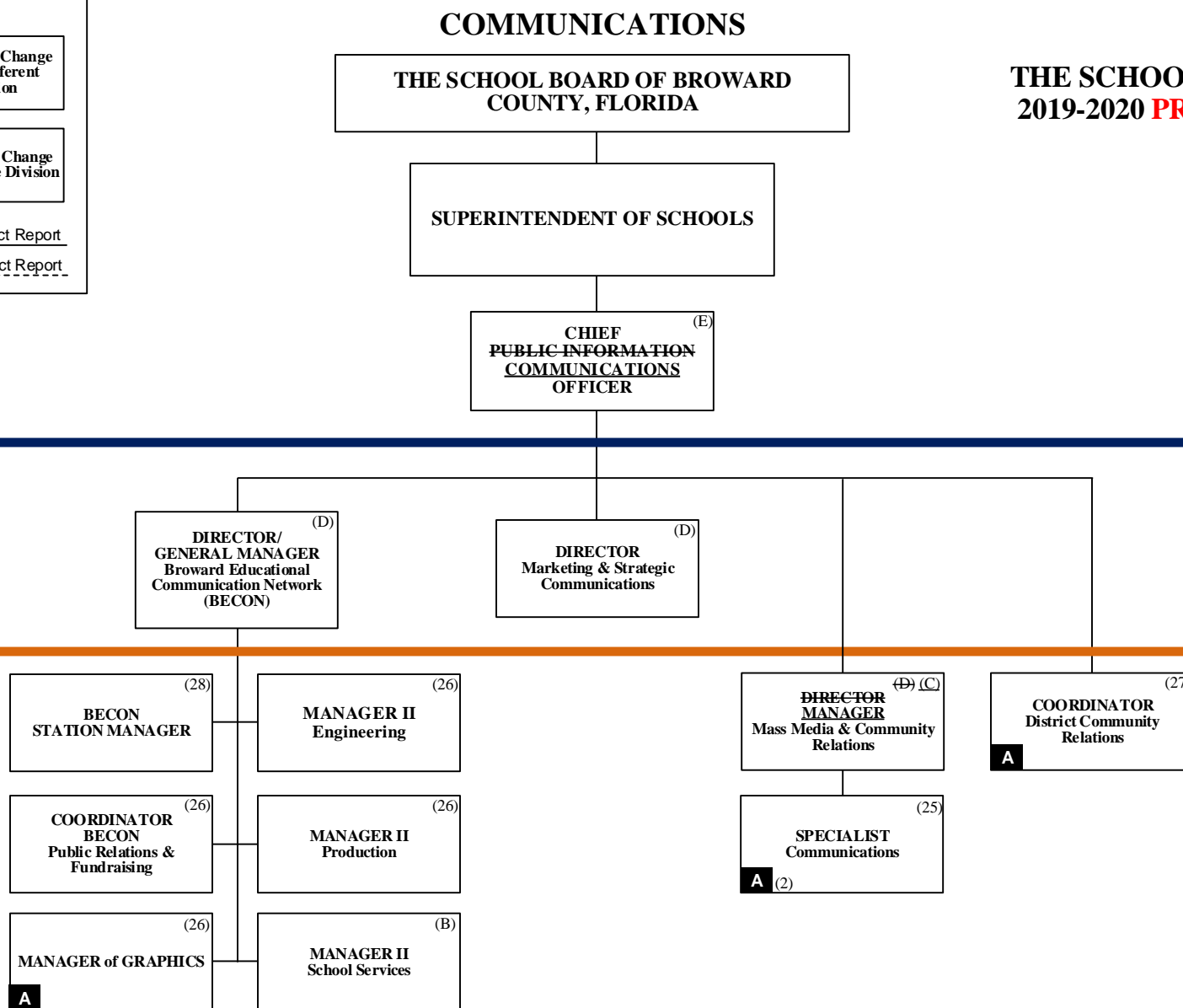




THE SCHOOL BOARD OF BROWARD COUNTY, FL
2019-2020 **PROPOSED** ORGANIZATIONAL CHART

**DRAFT
REVISED**

| Legend | | |
|---|---|--|
| Funding from sources other than General Funds N | New Position Job Description Exists N | Reporting Change from Different Division R |
| New Position Job Description Does Not Exist N ✓ | Job Study on Existing Position N | Alignment Change within same Division A |
| Revision to Existing Job Description/Title Change ✓ | Funding: C Capital FS Food Service <u>Direct Report</u> G General Gr Grant <u>Indirect Report</u> | |



PAY BANDS 'S' & 'E'

PAY BAND 'D'